

Corwell Gardens

Hillingdon • Middlesex • UB8 3JT

Offers In Excess Of: £350,000



coopers
est 1986

Corwell Gardens

Hillingdon • Middlesex • UB8 3JT

A modern two bedroom, two bathroom first floor apartment situated on Corwell Gardens, a popular residential road situated close to the Harlington Road offering easy access to local shops and schools, bus/road links including the M4/M40. The apartment comprises spacious hallway with doors leading to the 22ft open plan reception room/kitchen, 14ft main bedroom with fitted wardrobes and en-suite shower room, 15ft second bedroom and family bathroom. Outside there is allocated parking.

Two bedroom luxury apartment

First floor

Share of freehold

Great transport links

Close to local amenities

22ft kitchen/reception room

14ft main bedroom with en-suite

15ft second bedroom

Two bathrooms

Allocated parking

These particulars are intended as a guide and must not be relied upon as statements of fact. Your attention is drawn to the Important Notice on the last page.





Property

A beautifully presented two bedroom, two bathroom luxury first floor apartment that is situated within a small and exclusive development on a sought after road. The apartment comprises spacious hallway with doors leading to the 22ft open plan reception room/kitchen, 14ft main bedroom with fitted wardrobes and en-suite shower room, 15ft second bedroom and family bathroom.

Location

Corwell Gardens is a popular residential road situated close to the Harlington Road offering easy access to local shops and schools, bus/road links including the M4/M40 with its links to London and the Home Counties along with Stockley Park and Heathrow Airport. Uxbridge town centre with its multitude of shops, bars, restaurants and Metropolitan/Piccadilly line station is a short drive away.

Outside

The rear of the property benefits from allocated parking.



Schools:

Rosedale Primary School 0.5 miles
 Hewens Primary School 0.6 miles
 De Salis Studio College 0.6 miles



Train:

Hayes & Harlington station 1.4 miles
 West Drayton station 1.5 miles
 Hillingdon station 2.4 miles



Car:

M4, A40, M25, M40



Council Tax Band:

D

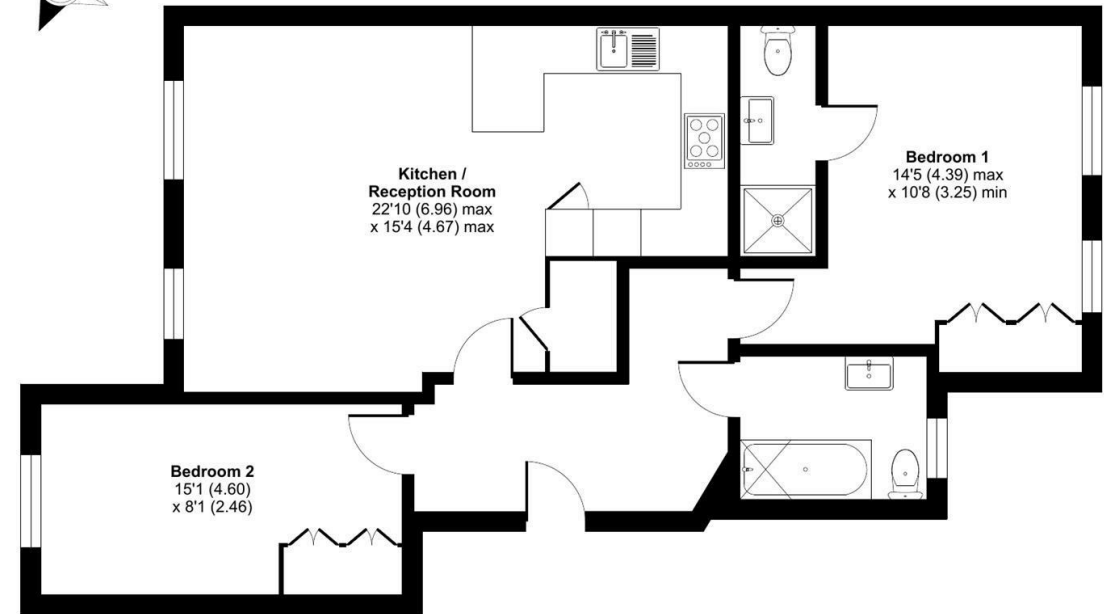
(Distances are straight line measurements from centre of postcode)



Corwell Gardens, Uxbridge, UB8

Approximate Area = 803 sq ft / 74.6 sq m

For identification only - Not to scale



FIRST FLOOR



Floor plan produced in accordance with RICS Property Measurement Standards incorporating International Property Measurement Standards (IPMS2 Residential). © nichecom 2024. Produced for Coopers. REF: 1179057

coopers
 est 1986

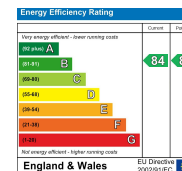
coopers
 est 1986

01895 230 103

109 Hillingdon Hill, Hillingdon Village,
 Middlesex, UB10 0JQ

hillingdon@coopersresidential.co.uk

CoopersResidential.co.uk



Important Notice: These particulars, whilst believed to be accurate are set out as a general outline only for guidance and do not constitute any part of an offer or contract. Intending purchasers should not rely on them as statements or representation of fact, but must satisfy themselves by inspection or otherwise has the authority to make or give any representation or warranty in respect of the property.